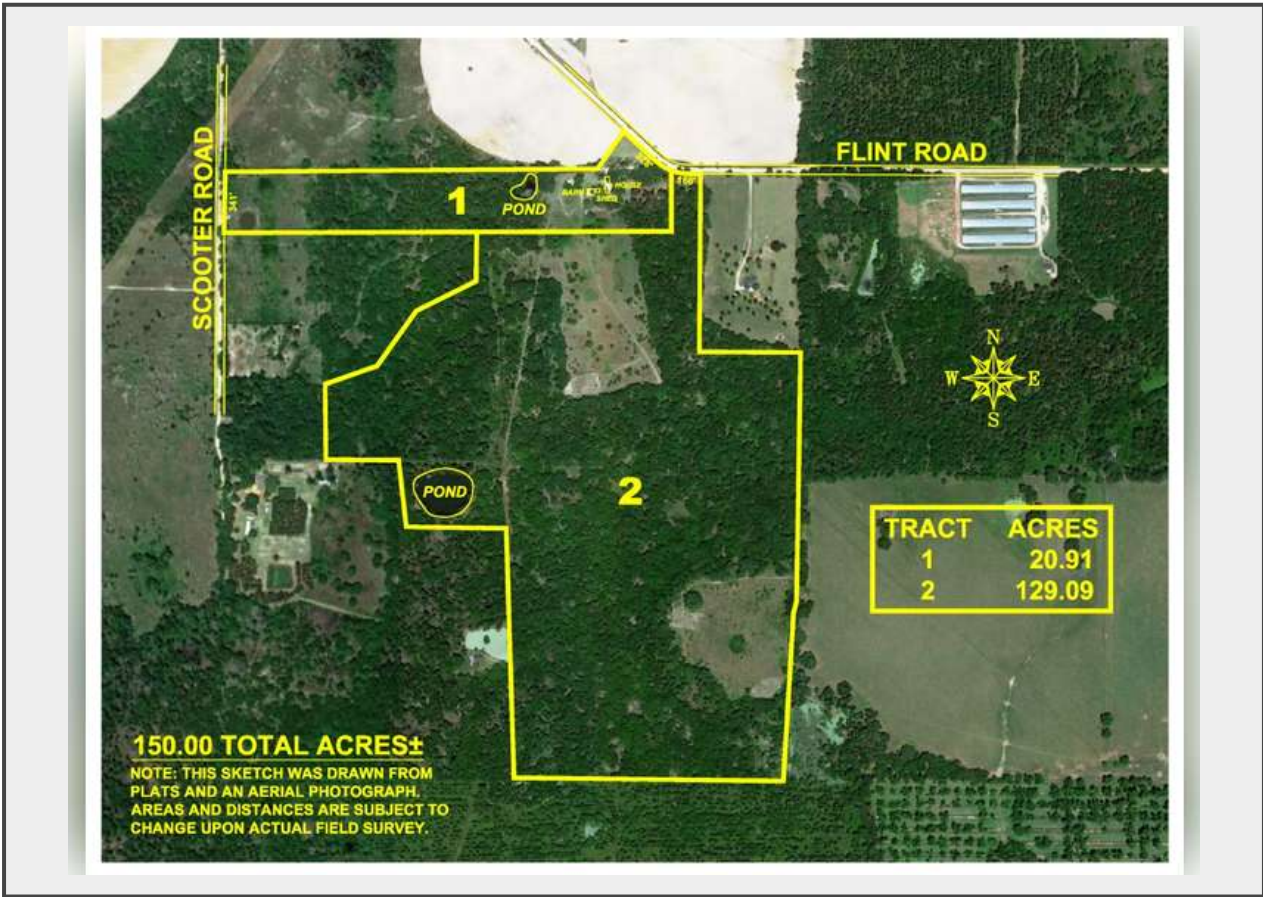


Sale Name: Declared Absolute! 150+/- Acres Sportsman's Paradise and Beautiful Home - Mitchell County

LOT 1 - Tract 1 - Newly Renovated Home on 20.91 Acres



Description

Tract 1 – Tract 1 contains 20.91+/- Acres with 328+/- Feet of Road Frontage on Flint Road and 341+/- Feet of Road Frontage on Scooter Road. This tract contains a beautiful 2,360SF newly renovated home along with a +/- SF steel barn. This tract is perfect for beautiful country living!

Quantity: 1



<https://multipar.wiregrassauctiongroup.com/>